

Space For Lease

Light Industrial Space

Stockton, CA

7,812 SF

Also Contact:
Michael Goldstein
Colliers International
(209)475-5106



3731 Metro Drive

Near Arch Road and Hwy 99
Stockton, CA

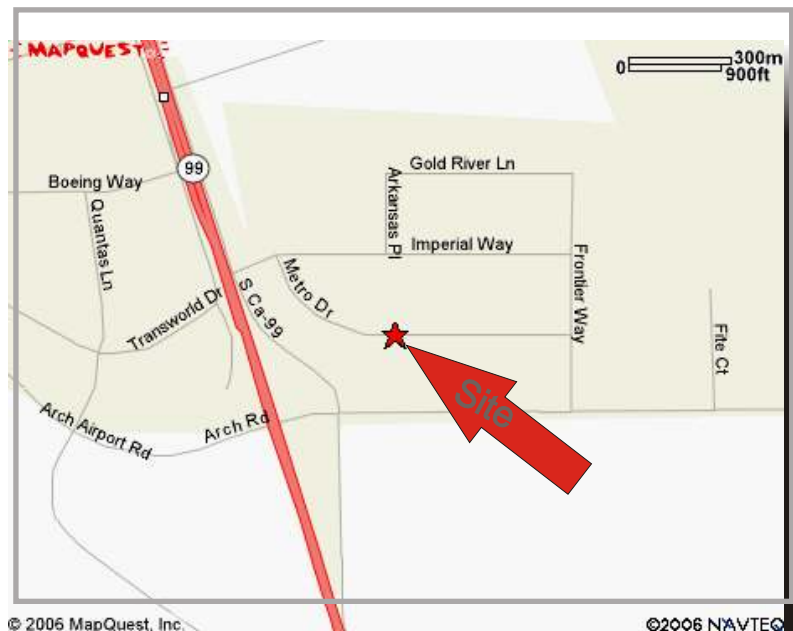
Easy access to Hwy 99

200 amps of power

20' clear height

700 square feet of office with
rest room

Rear 12 x 14 grade level roll-
up door



Contact: Herb Liverett or Jim Holmes
Herb Liverett Companies, Inc.
1100 N Street, Suite 1-C, Sacramento, CA 95814

www.callherb.com
Email: liverettco@sbcglobal.net
916.451.9011

The above information while not guaranteed, has been secured from sources we deem reliable. However, no warranty or representation, express or implied, is made as to the accuracy of the information contained herein. All information should be verified by the recipient prior to purchase or execution of legal documents.

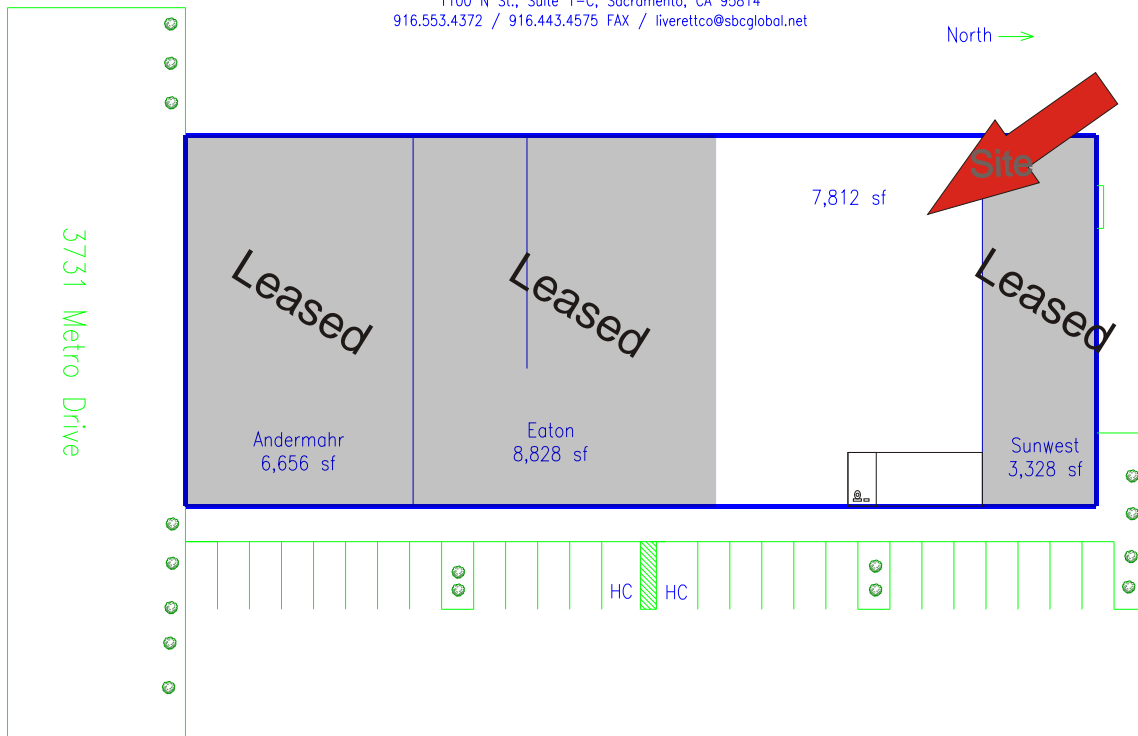
3731 Metro Drive

7,812 SF

Also Contact:
Michael Goldstein
Colliers International
(209)475-5106



3731 Metro Drive, Stockton, CA
Managed by Herb Liverett Companies, Inc.
1100 N St., Suite 1-C, Sacramento, CA 95814
916.553.4372 / 916.443.4575 FAX / liverettco@sbcglobal.net



Contact: Herb Liverett or Jim Holmes
Herb Liverett Companies, Inc.
1100 N Street, Suite 1-C, Sacramento, CA 95814

www.callherb.com
Email: liverettco@sbcglobal.net
916.451.9011

The above information while not guaranteed, has been secured from sources we deem reliable. However, no warranty or representation, express or implied, is made as to the accuracy of the information contained herein. All information should be verified by the recipient prior to purchase or execution of legal documents.