



8830 to 8850 Fruitridge Road

This building is located
on Fruitridge Road just West of
South Watt Avenue

Herb Liverett Companies, Inc.
916.451.9011, x111 / 916.443.4575 FAX
liverettco@sbcglobal.net

The above information while not guaranteed, has been secured from sources we deem reliable. However, no warranty or representation, express or implied, is made as to the accuracy of the information contained herein. All information should be verified by the recipient prior to purchase or execution of legal documents.

For Lease

8830 & 8834 Fruitridge Road Sacramento, California

Light Industrial Space

6,400 to 12,800 sq ft of
contiguous space is available

7,000 sq ft of yard is included
with the 12,800 sq ft space

Contact:

Herb Liverett
(916) 869.8017

8830 to 8850 Fruitridge Road

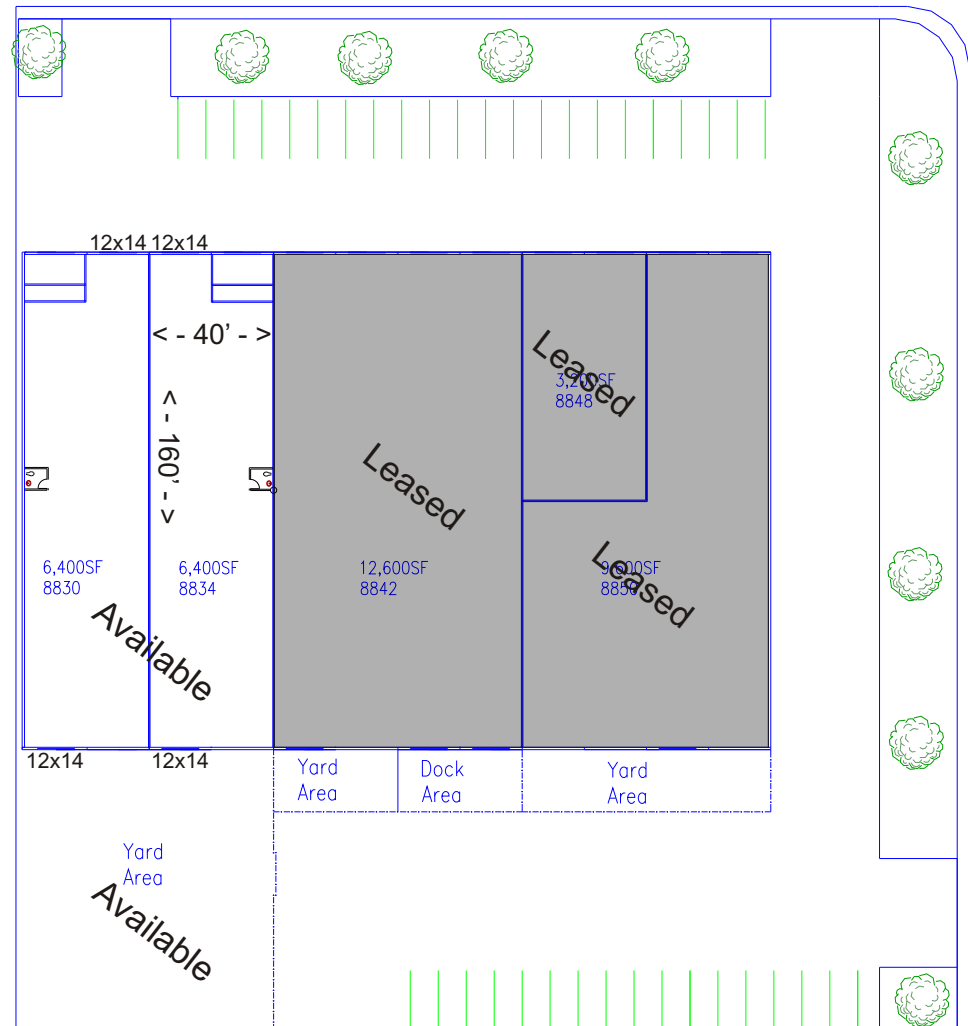
Site Plan

6,400 to 12,800 sq ft of contiguous space is available

7,000 sq ft of yard is included with the 12,800 sq ft space

200 amps of power per side for a total of 400 amps of power

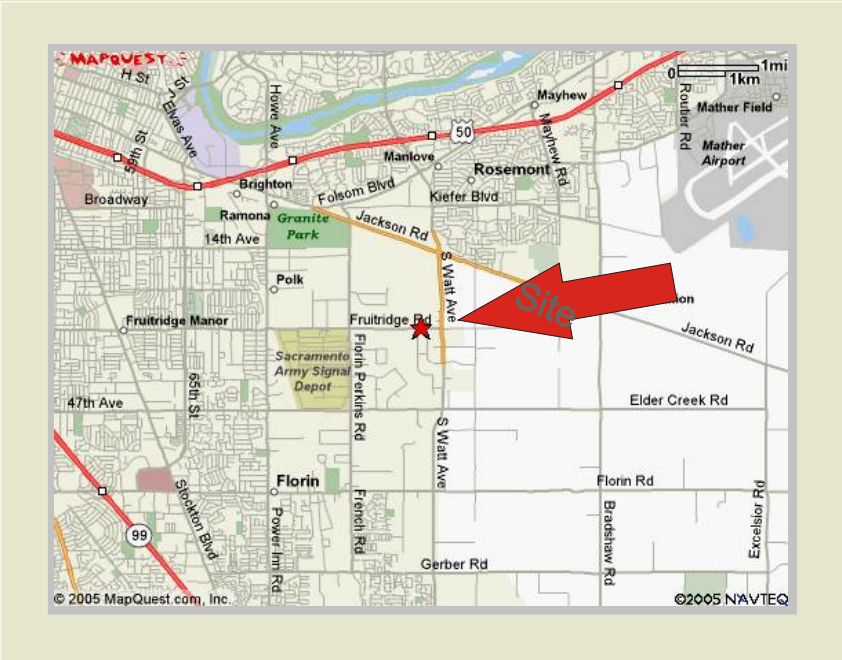
Drive through access is available for both spaces with 12 x 14 roll-up doors at each end of the space



Herb Liverett Companies, Inc.
916.451.9011, x111 / 916.443.4575 FAX
liverettco@sbcglobal.net

The above information while not guaranteed, has been secured from sources we deem reliable. However, no warranty or representation, express or implied, is made as to the accuracy of the information contained herein. All information should be verified by the recipient prior to purchase or execution of legal documents.

8830 to 8850 Fruitridge Road Sacramento, CA



Herb Liverett Companies, Inc.
916.451.9011, x111 / 916.443.4575 FAX
liverettco@sbcglobal.net

The above information while not guaranteed, has been secured from sources we deem reliable. However, no warranty or representation, express or implied, is made as to the accuracy of the information contained herein. All information should be verified by the recipient prior to purchase or execution of legal documents.