

For Sale 9,324 sf Retail-Office

Sales Price
\$1,850,000
5,000 sq ft
Available for Owner-User



“Best Location
in Clearwater, FL”

Located at the SE corner
of Cleveland St and
South Fort Harrison Ave.

433 Cleveland Street

Tenants:

Starbuck's Coffee / G & P Fashion Service



Contact:

Jim Holmes 916.952.5298

Herb Liverett 916.869.8117

Susan Slayton 916.397.0806

Herb Liverett Companies, Inc.
Holmes Commercial Properties, Inc.
916.553.4372 / 916.485.6788 FAX
liverettco@sbcglobal.net

The above information while not guaranteed, has been secured from sources we deem reliable. However, no warranty or representation, express or implied, is made as to the accuracy of the information contained herein. All information should be verified by the recipient prior to purchase or execution of legal documents.

For Sale 9,324 sf Retail-Office Clearwater, FL

Herb Liverett Companies, Inc.
916.451.9011, x111 / 916.443.4575 FAX
liverettco@sbcglobal.net



433 Cleveland St.



Rear of building



Looking to the right on Cleveland St.



Construction is now complete

Contact:
Herb Liverett 916.869.8017
Susan Slayton 916.397.9806
Jim Holmes 916.952.5298

The above information while not guaranteed, has been secured from sources we deem reliable. However, no warranty or representation, express or implied, is made as to the accuracy of the information contained herein. All information should be verified by the recipient prior to purchase or execution of legal documents.

For Sale 9,324 sf Retail-Office Clearwater, FL



Data use subject to license.
© 2005 DeLorme. Street Atlas USA® 2006.
www.delorme.com

MN (5.1° W)

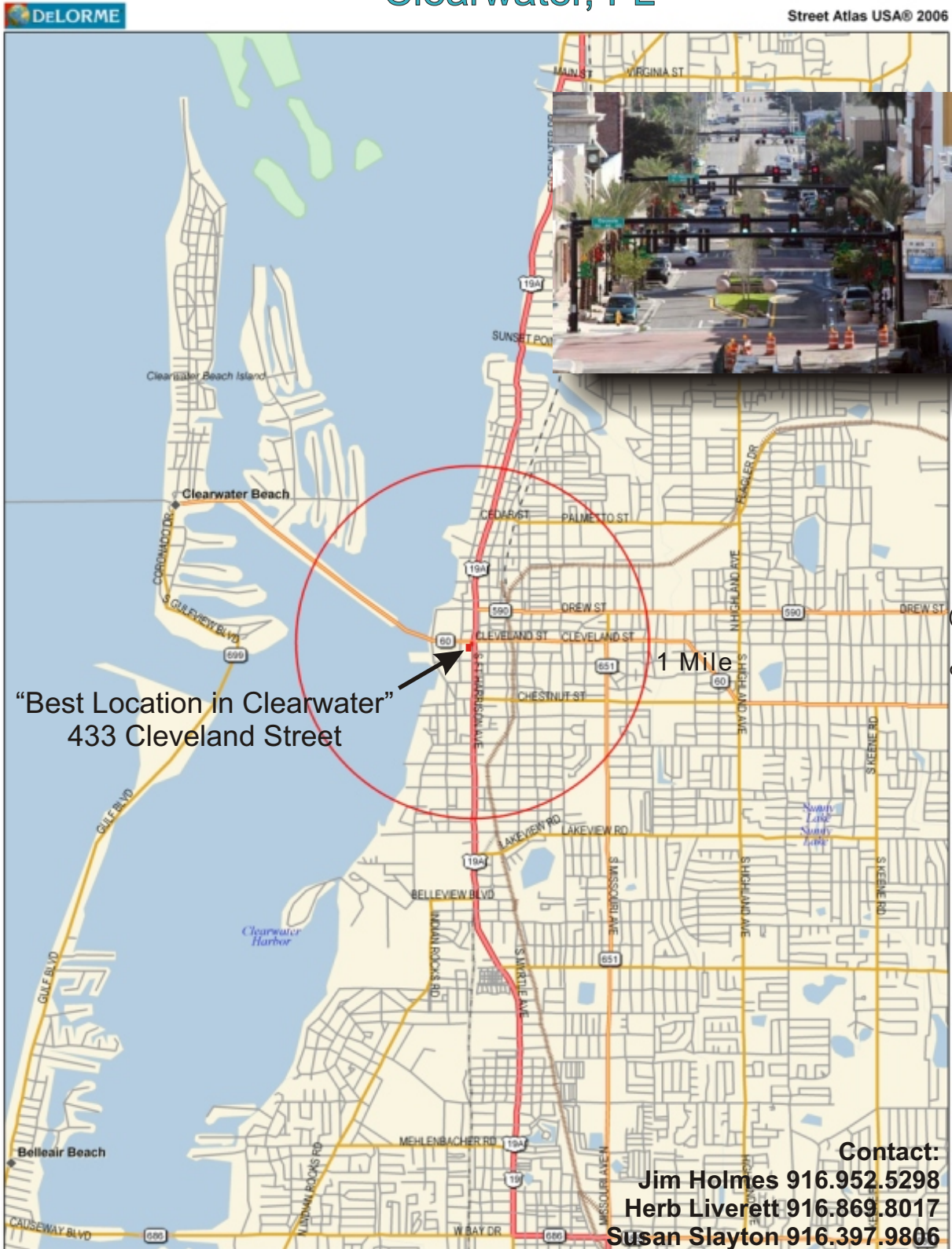
0 20 40 60 80 100 mi

Data Zoom 5-7

The above information while not guaranteed, has been secured from sources we deem reliable. However, no warranty or representation, express or implied, is made as to the accuracy of the information contained herein. All information should be verified by the recipient prior to purchase or execution of legal documents.

Herb Liverett Companies, Inc.
Holmes Commercial Properties, Inc.
916.553.4372 / 916.485.6788 FAX
liverettco@sbcglobal.net

For Sale 9,324 sf Retail-Office Clearwater, FL



"Best Location in Clearwater"
433 Cleveland Street

The above information while not guaranteed, has been secured from sources we deem reliable. However, no warranty or representation, express or implied, is made as to the accuracy of the information contained herein. All information should be verified by the recipient prior to purchase or execution of legal documents.

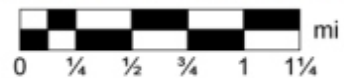
Herb Liverett Companies, Inc.
Holmes Commercial Properties, Inc.
916.553.4372 / 916.485.6788 FAX
liverettco@sbcglobal.net

Contact:
Jim Holmes 916.952.5298
Herb Liverett 916.869.8017
Susan Slayton 916.397.9806

Data use subject to license.

© 2005 DeLorme. Street Atlas USA © 2006.

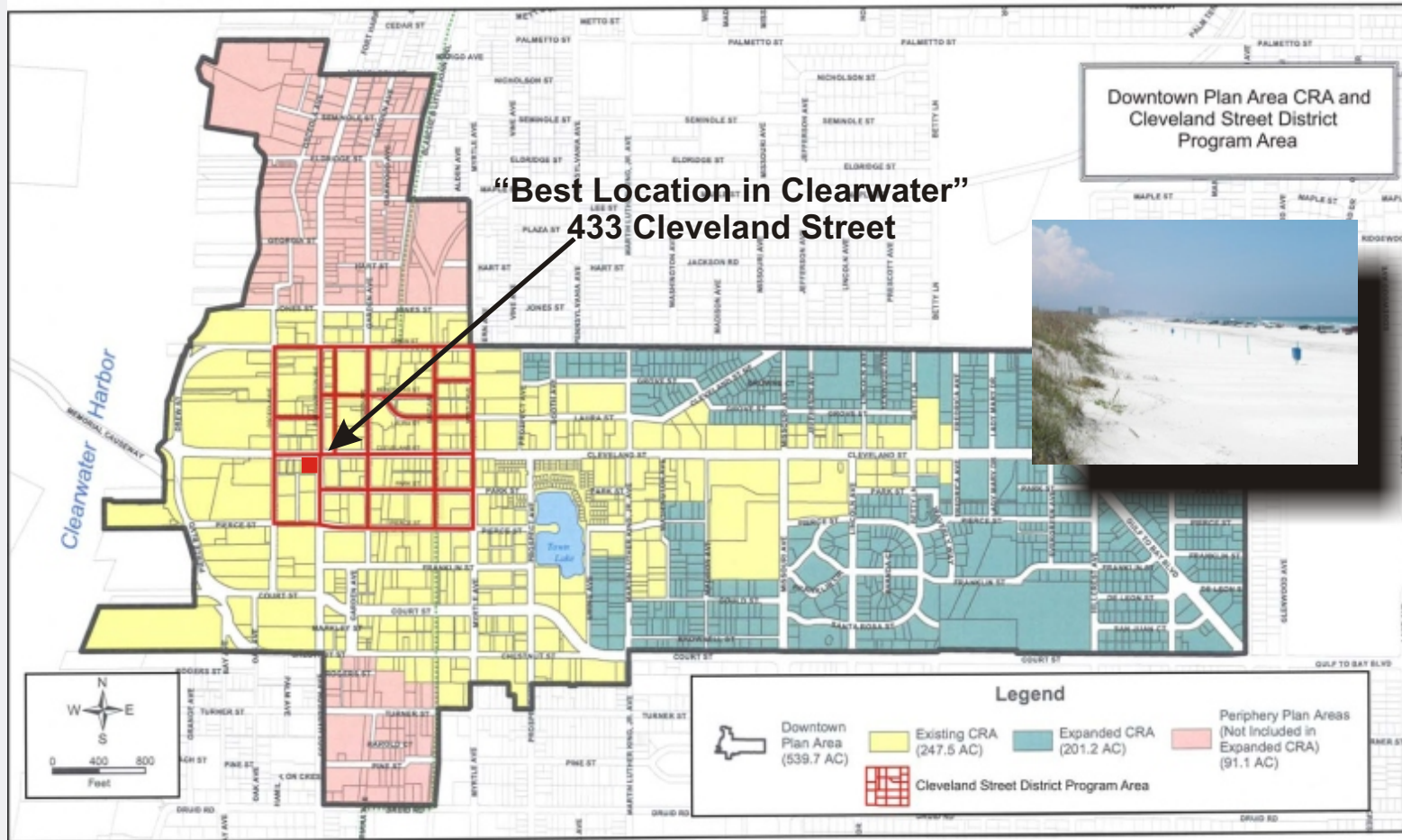
www.delorme.com



Data Zoom 12-1

For Sale 9,324 sf Retail-Office Clearwater, FL

Herb Liverett Companies, Inc.
916.451.9011, x111 / 916.443.4575 FAX
liverettco@sbcglobal.net



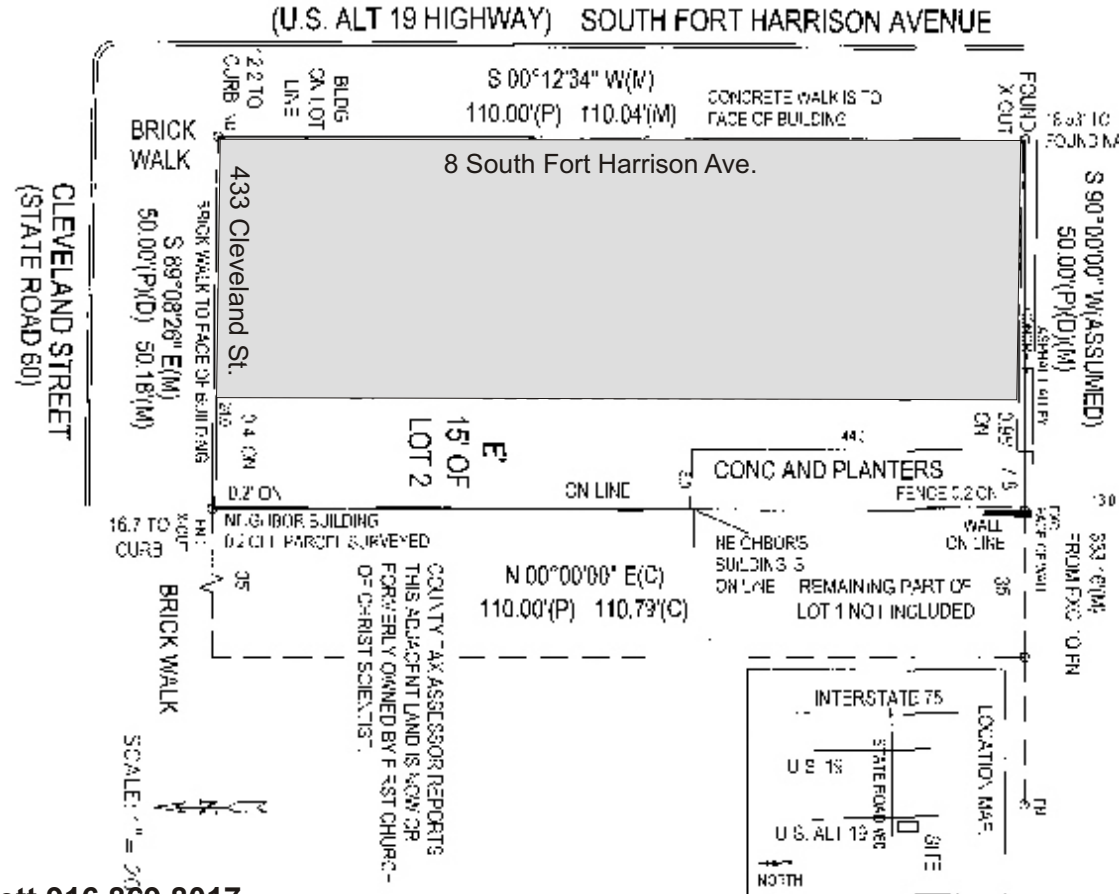
Contact:
Herb Liverett 916.869.8017
Susan Slayton 916.397.9806
Jim Holmes 916.952.5298

The above information while not guaranteed, has been secured from sources we deem reliable. However, no warranty or representation, express or implied, is made as to the accuracy of the information contained herein. All information should be verified by the recipient prior to purchase or execution of legal documents.

For Sale 9,324 sf Retail-Office Clearwater, FL

ALTA/ACSM LAND TITLE SURVEY CERTIFICATION

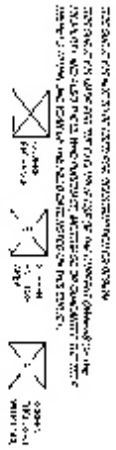
THAT THIS MAP AND THE SURVEY ON WHICH IT IS BASED WERE MADE IN ACCORDANCE WITH MINIMUM STANDARD DETAIL REQUIREMENTS FOR ALTA/ACSM LAND TITLE SURVEYS. THE POSITIONAL UNCERTAINTIES RESULTING FROM THE SURVEY MEASUREMENTS MADE ON THE SURVEY DO NOT EXCEED THE ALLOWABLE POSITIONAL TOLERANCE.



SUBJECT PARCEL IS SHOWN ON THE FEMA FLOOD INSURANCE MAP AS BEING IN ZONE X

ALTA/ACSM SURVEY OF 433 CLEVELAND STREET, CLEARWATER, FLORIDA, USA THE WEST THIRTY-FIVE (35) FEET OF LOT ONE (1) AND THE EAST FIFTEEN (15) FEET OF LOT TWO (2), BLOCK 'B', JOHN R. DAVEY, ET AL RE-SUBDIVISION OF 'EARL, MUMFORD, ROSS AND STARR'S SUBDIVISION OF CLEARWATER HARBOR', ACCORDING TO THE PLAT THEREOF AS RECORDED IN PLAT BOOK 1, PAGE 87, OF THE PUBLIC RECORDS OF HILLSBOROUGH COUNTY, FLORIDA OF WHICH PINELLAS COUNTY WAS FORMERLY A PART

Contact:
Herb Liverett 916.869.8017
Susan Slayton 916.397.9806
Jim Holmes 916.952.5298



Herb Liverett Companies, Inc.
 Holmes Commercial Properties, Inc.
 916.553.4372 / 916.485.6788 FAX
 liverettco@sbcglobal.net

The above information while not guaranteed, has been secured from sources we deem reliable. However, no warranty or representation, express or implied, is made as to the accuracy of the information contained herein. All information should be verified by the recipient prior to purchase or execution of legal documents.