

# For Sale 9,324 sf Retail-Office

Sales Price  
\$1,850,000  
5,000 sq ft  
Available for Owner-User

“Best Location  
in Clearwater, FL”

Located at the SE corner  
of Cleveland St and  
South Fort Harrison Ave.



433 Cleveland Street

Tenants:

Starbuck's Coffee / G & P Fashion Service



Contact:

Jim Holmes 916.952.5298

Herb Liverett 916.869.8017

Susan Slayton 916.397.9806

Herb Liverett Companies, Inc.  
Holmes Commercial Properties, Inc.  
916.553.4372 / 916.485.6788 FAX  
liverettco@sbcglobal.net

The above information while not guaranteed, has been secured from sources we deem reliable. However, no warranty or representation, express or implied, is made as to the accuracy of the information contained herein. All information should be verified by the recipient prior to purchase or execution of legal documents.

## For Sale 9,324 sf Retail-Office Clearwater, FL

Herb Liverett Companies, Inc.  
916.451.9011, x111 / 916.443.4575 FAX  
liverettco@sbcglobal.net



433 Cleveland St.



Rear of building



Looking to the right on Cleveland St.



Construction is now complete

Contact:  
Herb Liverett 916.869.8017  
Susan Slayton 916.397.9806  
Jim Holmes 916.952.5298

The above information while not guaranteed, has been secured from sources we deem reliable. However, no warranty or representation, express or implied, is made as to the accuracy of the information contained herein. All information should be verified by the recipient prior to purchase or execution of legal documents.

# For Sale 9,324 sf Retail-Office Clearwater, FL



**Contact:**  
Jim Holmes 916.952.5298  
Herb Liverett 916.869.8017  
Susan Slayton 916.397.9806

Herb Liverett Companies, Inc.  
Holmes Commercial Properties, Inc.  
916.553.4372 / 916.485.6788 FAX  
liverettco@sbcglobal.net

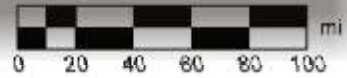
The above information while not guaranteed, has been secured from sources we deem reliable. However, no warranty or representation, express or implied, is made as to the accuracy of the information contained herein. All information should be verified by the recipient prior to purchase or execution of legal documents.

Data use subject to license.

© 2005 DeLorme. Street Atlas USA® 2006.

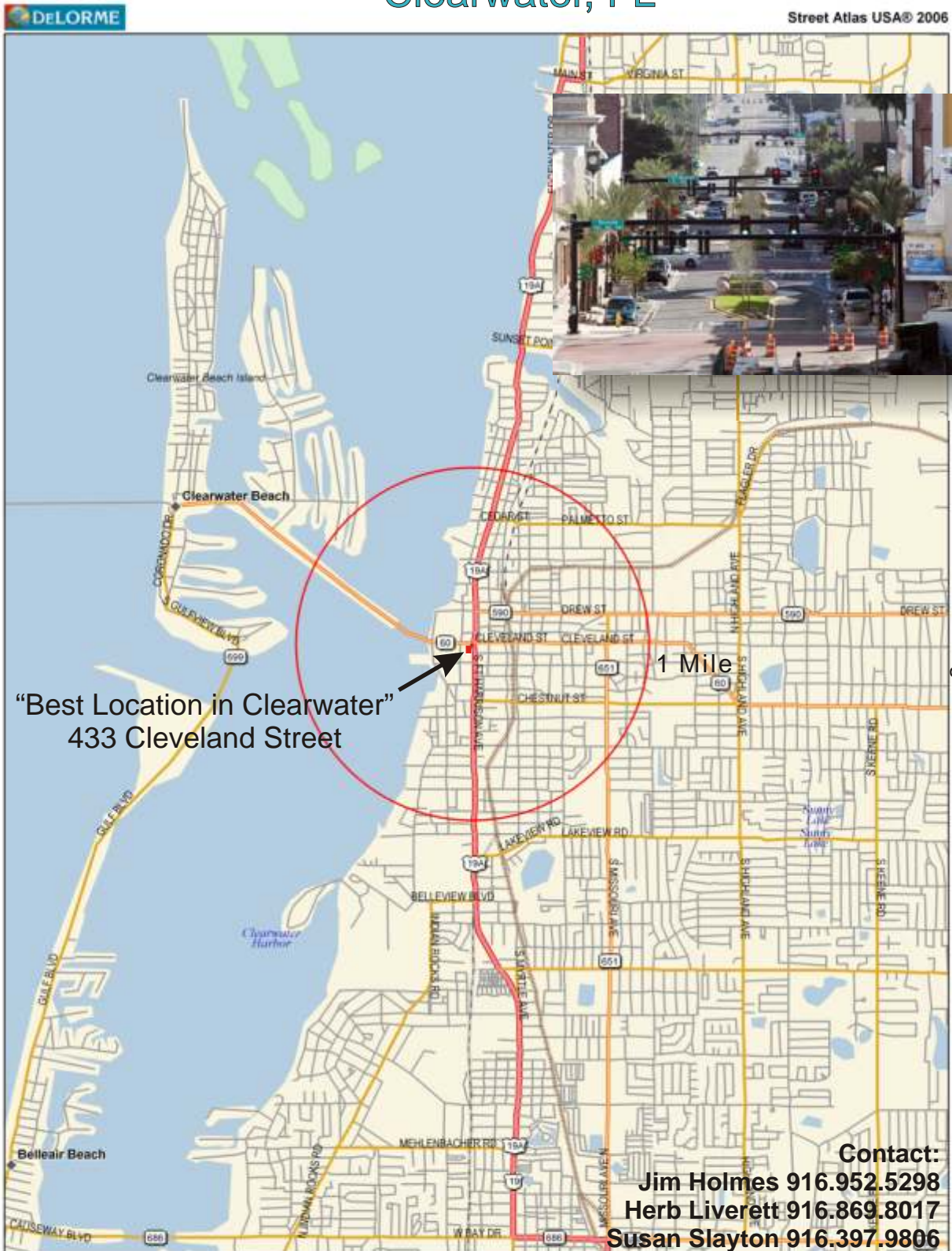
www.delorme.com

MN (5.1° W)



Data Zoom 5-7

# For Sale 9,324 sf Retail-Office Clearwater, FL



**"Best Location in Clearwater"**  
433 Cleveland Street

**Contact:**  
**Jim Holmes 916.952.5298**  
**Herb Liverett 916.869.8017**  
**Susan Slayton 916.397.9806**

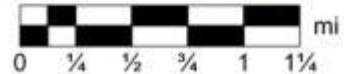
Herb Liverett Companies, Inc.  
 Holmes Commercial Properties, Inc.  
 916.553.4372 / 916.485.6788 FAX  
 liverettco@sbcglobal.net

The above information while not guaranteed, has been secured from sources we deem reliable. However, no warranty or representation, express or implied, is made as to the accuracy of the information contained herein. All information should be verified by the recipient prior to purchase or execution of legal documents.

Data use subject to license.

© 2005 DeLorme. Street Atlas USA® 2006.

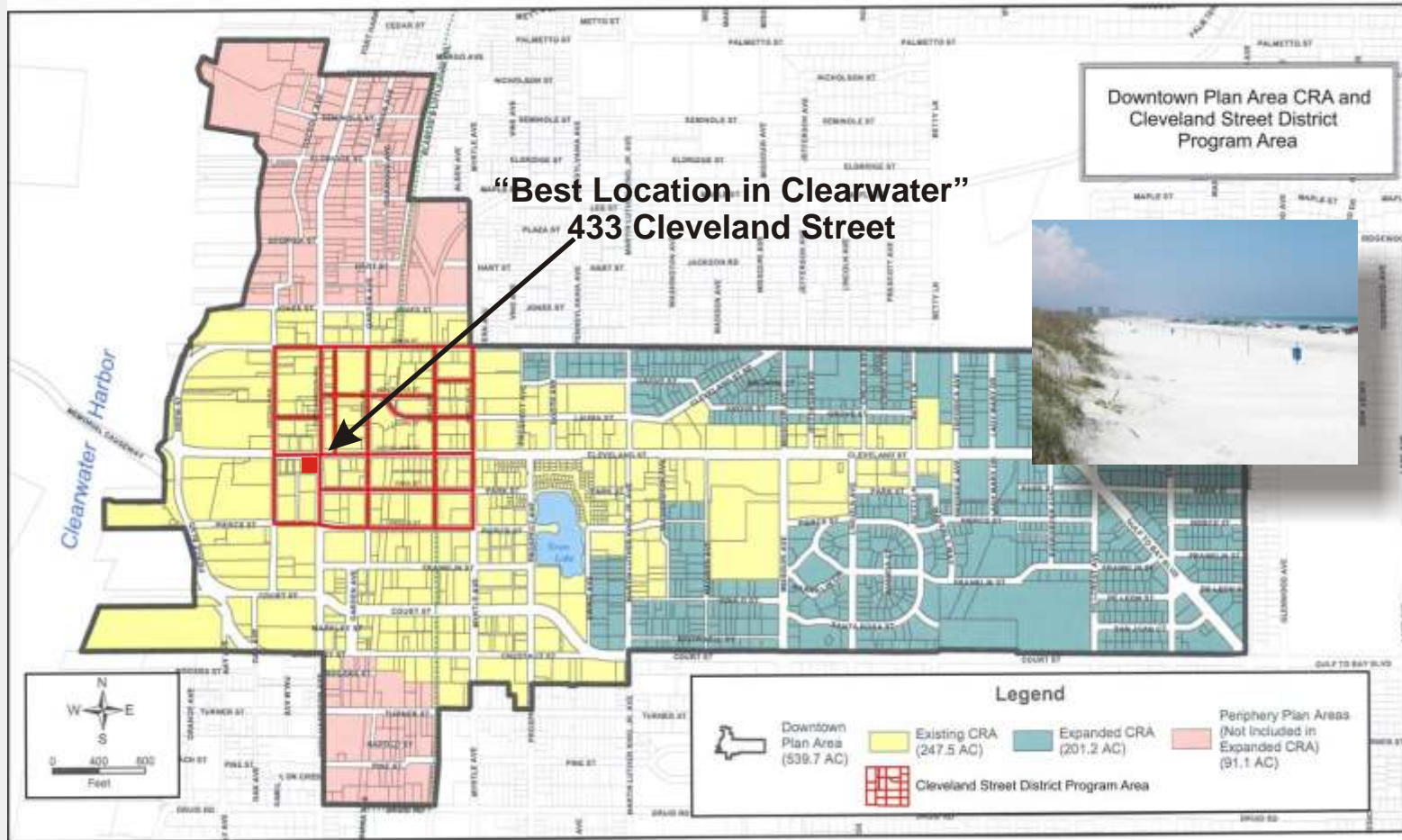
www.delorme.com



Data Zoom 12-1

# For Sale 9,324 sf Retail-Office Clearwater, FL

Herb Liverett Companies, Inc.  
916.451.9011, x111 / 916.443.4575 FAX  
liverettco@sbcglobal.net



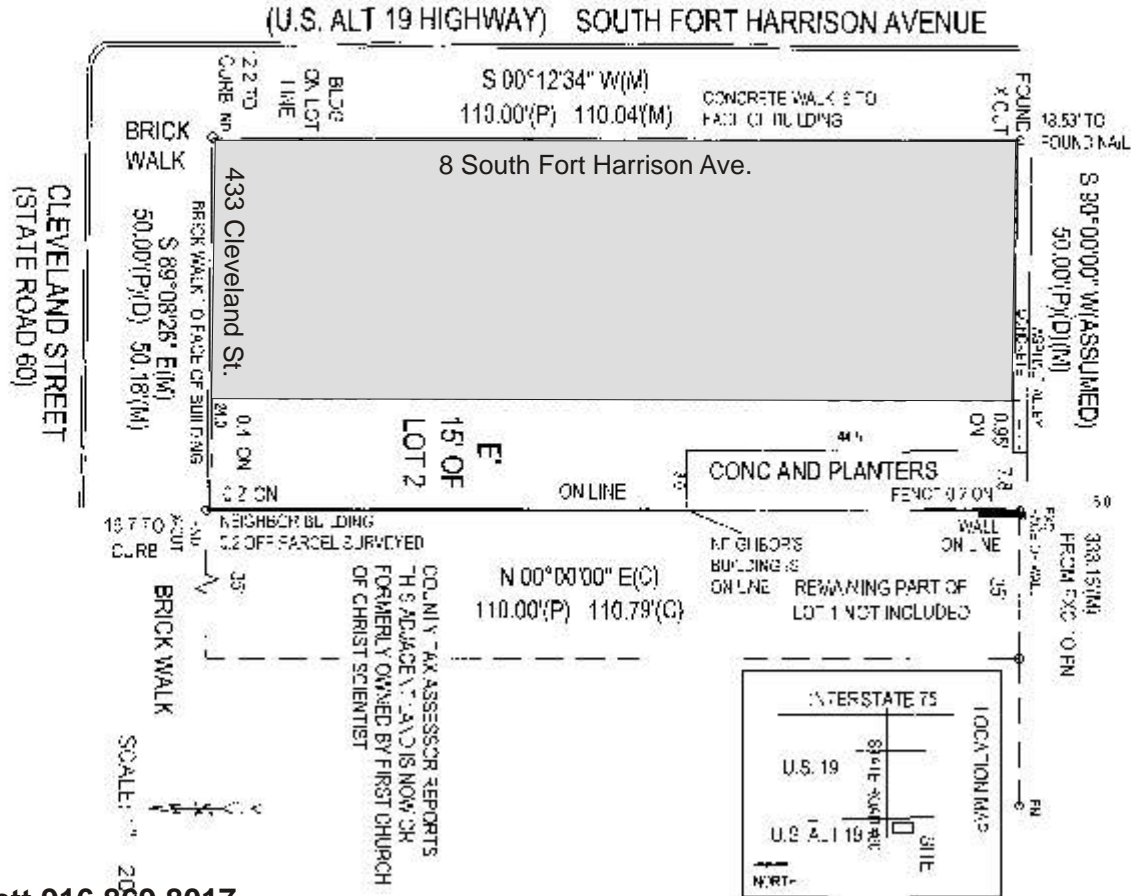
Contact:  
Herb Liverett 916.869.8017  
Susan Slayton 916.397.9806  
Jim Holmes 916.952.5298

The above information while not guaranteed, has been secured from sources we deem reliable. However, no warranty or representation, express or implied, is made as to the accuracy of the information contained herein. All information should be verified by the recipient prior to purchase or execution of legal documents.

# For Sale 9,324 sf Retail-Office Clearwater, FL

## ALTA/ACSM LAND TITLE SURVEY CERTIFICATION

THAT THIS MAP AND THE SURVEY ON WHICH IT IS BASED WERE MADE IN ACCORDANCE WITH MINIMUM STANDARD DETAIL REQUIREMENTS FOR ALTA/ACSM LAND TITLE SURVEYS. THE POSITIONAL UNCERTAINTIES RESULTING FROM THE SURVEY MEASUREMENTS MADE ON THE SURVEY DO NOT EXCEED THE ALLOWABLE POSITIONAL TOLERANCE.



SUBJECT PARCEL IS SHOWN ON THE FEMA FLOOD INSURANCE MAP AS BEING IN ZONE X

ALTA/ACSM SURVEY OF 433 CLEVELAND STREET, CLEARWATER, FLORIDA, USA THE WEST THIRTY-FIVE (35) FEET OF LOT ONE (1) AND THE EAST FIFTEEN (15) FEET OF LOT TWO (2), BLOCK 'B', JOHN R. DAVEY, ET AL RE-SUBDIVISION OF 'EARL, MUMFORD, ROSS AND STARRS' SUBDIVISION OF CLEARWATER HARBOR, ACCORDING TO THE PLAT THEREOF AS RECORDED IN PLAT BOOK 1, PAGE 87, OF THE PUBLIC RECORDS OF HILLSBOROUGH COUNTY, FLORIDA OF WHICH PINELLAS COUNTY WAS FORMERLY A PART



**Contact:**  
**Herb Liverett 916.869.8017**  
**Susan Slayton 916.397.9806**  
**Jim Holmes 916.952.5298**

Herb Liverett Companies, Inc.  
 Holmes Commercial Properties, Inc.  
 916.553.4372 / 916.485.6788 FAX  
 liverettco@sbcglobal.net

The above information while not guaranteed, has been secured from sources we deem reliable. However, no warranty or representation, express or implied, is made as to the accuracy of the information contained herein. All information should be verified by the recipient prior to purchase or execution of legal documents.