

Herb Liverett Companies, Inc.
1817 Maryal Drive, Suite 300
Sacramento, CA 95864
916.485.5575 / 916.485.6788 FAX
www.callherb.com



2400 Manning Street

One of two 17,500 square foot concrete tilt-up industrial buildings

Great location situated off
Business 80 Between El Camino
and Arden Way

This project has a **6,400 sqft office area**
(Please see the page two diagram)

For Lease

2400 - 2410
Manning Street
Sacramento, CA

Leasing
From 3,200 to 17,600 sqft

The site is completely fenced
with wrought iron fencing

Contact:
Herb Liverett 916.869.8017
Susan Slayton 916.397.9806
Jim Holmes 916.952.5298

Aggressive
Lease
Concessions
to
Qualified Tenants

The above information while not guaranteed, has been secured from sources we deem reliable. However no warranty or representation, express or implied, is made as to the accuracy of the information contained herein. All information should be verified by the recipient prior to purchase or execution of legal documents.

Herb Liverett Companies, Inc.
 1817 Maryal Drive, Suite 300
 Sacramento, CA 95864
 916.485.5575 / 916.485.6788 FAX
 www.callherb.com

For Lease

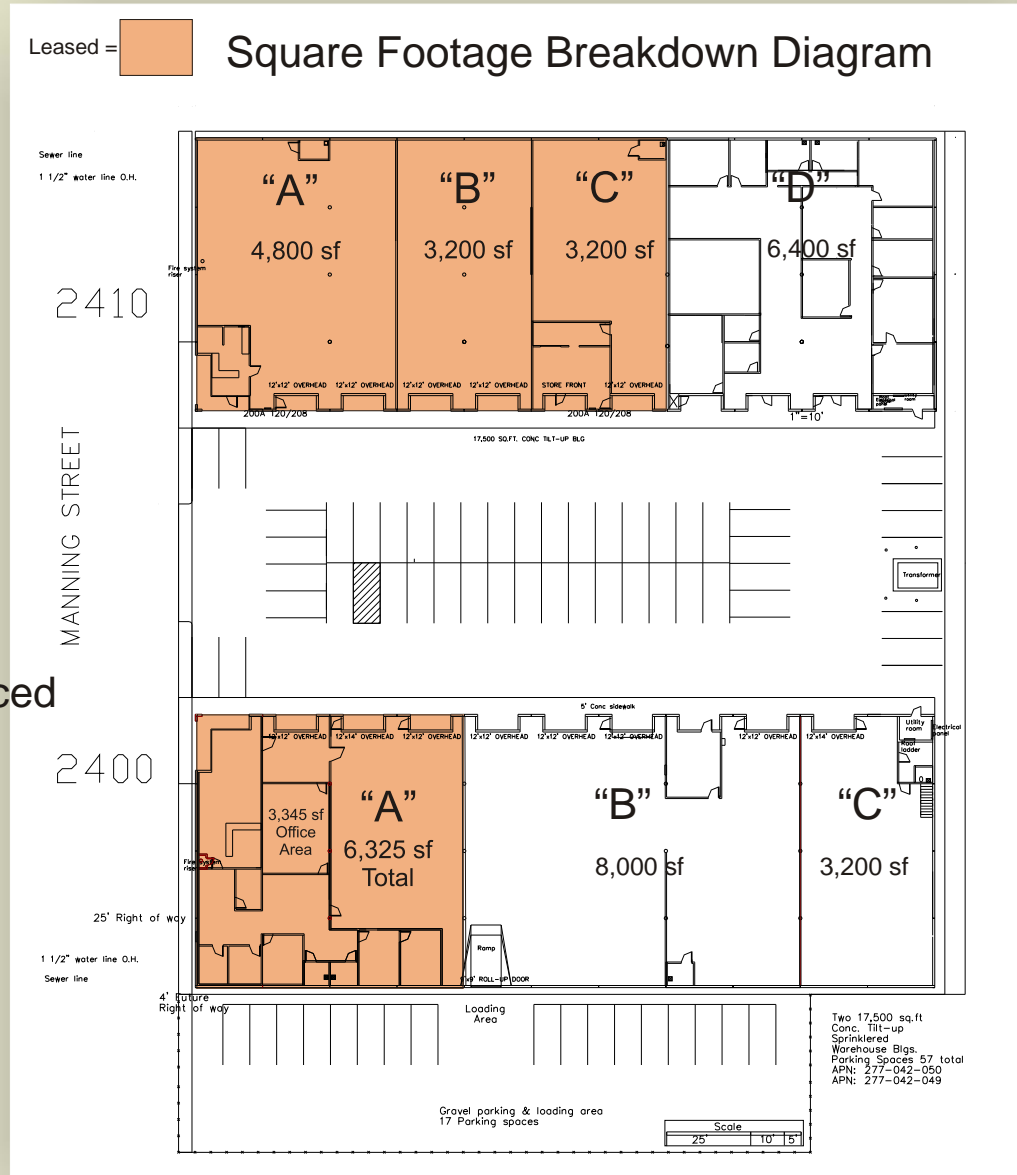
2400 - 2410
 Manning Street
 Sacramento, CA

Site Plan

Leasing
 From 3,200 to 17,600 sqft

The site is completely fenced
 with wrought iron fencing

Contact:
 Herb Liverett 916.869.8017
 Susan Slayton 916.397.9806
 Jim Holmes 916.952.5298



The above information while not guaranteed, has been secured from sources we deem reliable. However no warranty or representation, express or implied, is made as to the accuracy of the information contained herein. All information should be verified by the recipient prior to purchase or execution of legal documents.

For Lease

2400 - 2410 Manning Street Sacramento, CA

**Aggressive
Lease
Concessions
to
Qualified Tenants**

Herb Liverett Companies, Inc.
1817 Maryal Drive, Suite 300
Sacramento, CA 95864
916.485.5575 / 916.485.6788 FAX
www.callherb.com



**Leasing
From 3,200 to 17,600 sqft**

**The site is completely fenced
with wrought iron fencing**

The above information while not guaranteed, has been secured from sources we deem reliable. However no warranty or representation, express or implied, is made as to the accuracy of the information contained herein. All information should be verified by the recipient prior to purchase or execution of legal documents.